

\$4,000 - Bay 1, 4224 42 Avenue, Whitecourt

MLS® #A2059614

\$4,000

0 Bedroom, 0.00 Bathroom,
Commercial on 0.00 Acres

NONE, Whitecourt, Alberta

THIS 4000 SQ FT OFFICE AND SHOP IS LOCATED ONE BLOCK NORTH OFF HIGHWAY 43. SOUTH OF THE RCMP BUILDNG. NEW LED LIGHTING IN SHOP, PAVED PARKING IN FRONT AND A SECURE FENCED YARD IN THE REAR. AVAILABLE NOW!

Built in 1995

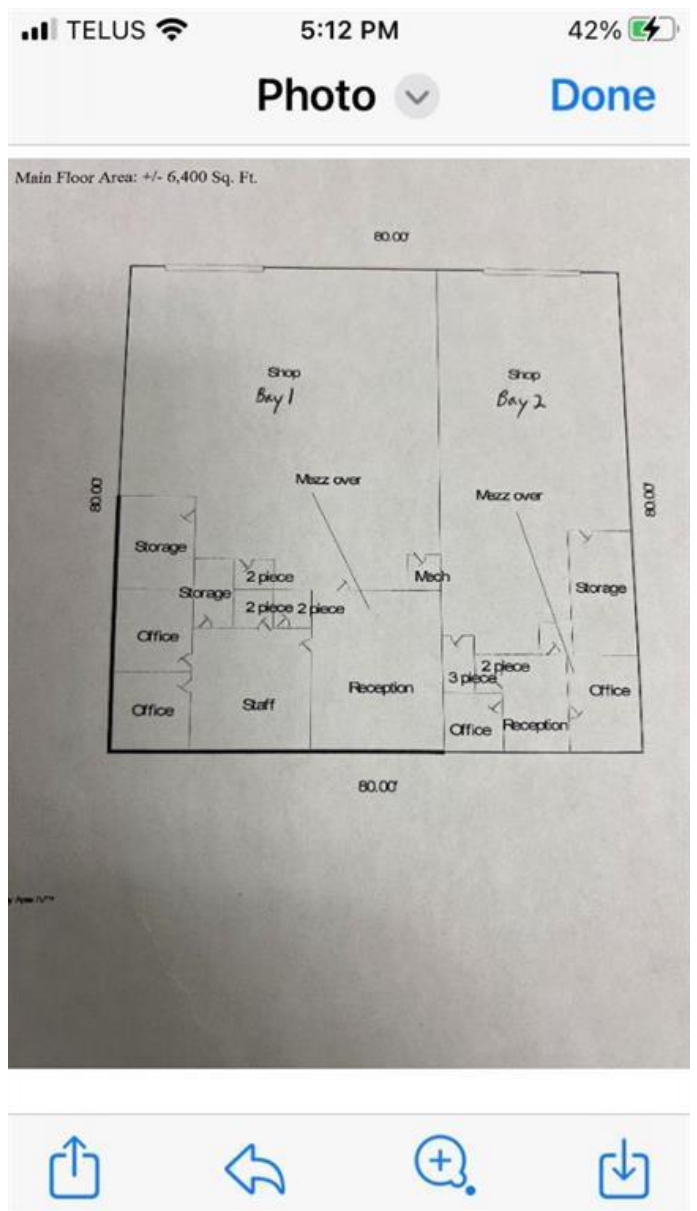
Essential Information

MLS® #	A2059614
Price	\$4,000
Sold Price	\$4,000
Bathrooms	0.00
Acres	0.00
Year Built	1995
Type	Commercial
Sub-Type	Business
Status	Sold

Community Information

Address	Bay 1, 4224 42 Avenue
Subdivision	NONE
City	Whitecourt
County	Woodlands County
Province	Alberta
Postal Code	t7s0a3

Interior



Cooling Partial

Additional Information

Date Listed June 20th, 2023
Date Sold March 19th, 2024
Days on Market 273
Zoning M-3 BUSINESS INDUSTRIAL
HOA Fees 0.00

Listing Details

Listing Office RE/MAX ADVANTAGE (WHITECOURT)

Data is supplied by Pillar 9â„¢ MLS® System. Pillar 9â„¢ is the owner of the copyright in its MLS® System. Data is deemed reliable but is not guaranteed accurate by Pillar 9â„¢. The trademarks MLS®, Multiple Listing Service® and the associated logos are owned by The Canadian Real Estate Association (CREA) and identify the quality of services provided by real estate professionals who are members of CREA. Used under license.