

\$374,900 - 10 Beaver Drive, Whitecourt

MLS® #A2108242

\$374,900

4 Bedroom, 3.00 Bathroom, 1,213 sqft

Residential on 0.17 Acres

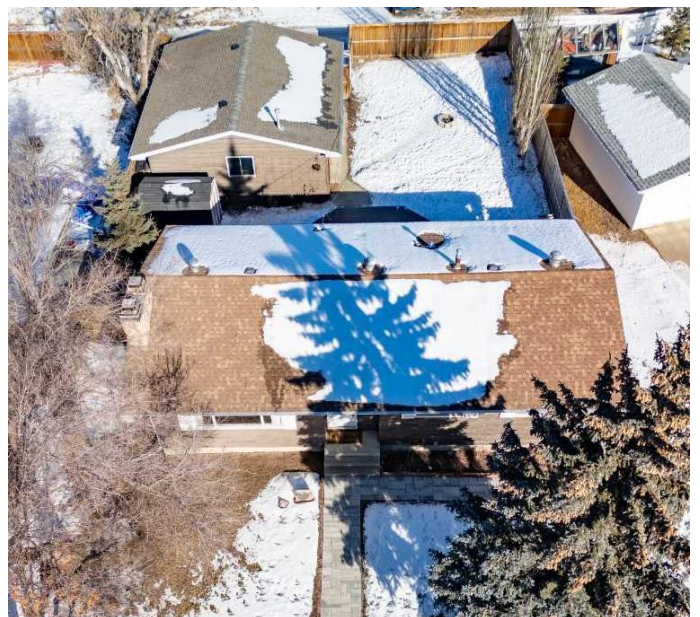
NONE, Whitecourt, Alberta

Welcome to your dream home! This charming 4-bedroom, 3-bathroom character house offers the perfect blend of modern updates and classic charm. Situated in an ideal location close to schools, the hospital, recreation center, and shopping, this home is a true gem.

As you step inside, you'll be greeted by a warm and inviting atmosphere, with a spacious living room featuring a wood-burning fireplace, perfect for those chilly evenings. The recently updated kitchen boasts stainless steel appliances and ample counter space, making it a chef's delight. The basement offers a lovely open concept with a modern gas fireplace, ideal for entertaining.

The spacious bedrooms offer plenty of room for the whole family, while the updated bathrooms add a touch of luxury. Outside, you'll find a composite deck with a natural gas hook up for the BBQ, ideal for outdoor entertaining. Additionally, the property features an oversized 30x26 heated garage with a concrete parking pad, gated RV parking, and back alley access. You'll also appreciate the new furnace with central AC and a brand new hot water tank, making this home turnkey ready!

But perhaps the best feature of this home is its location. Situated on a nice lot that looks across to Centennial Park, you'll enjoy stunning views and easy access to numerous



mountain bike and walking trails.

Don't miss your chance to make this your forever home! Go see all that this wonderful property has to offer.

Built in 1969

Essential Information

| | |
|----------------|-------------|
| MLS® # | A2108242 |
| Price | \$374,900 |
| Sold Price | \$370,000 |
| Bedrooms | 4 |
| Bathrooms | 3.00 |
| Full Baths | 2 |
| Half Baths | 1 |
| Square Footage | 1,213 |
| Acres | 0.17 |
| Year Built | 1969 |
| Type | Residential |
| Sub-Type | Detached |
| Style | Bungalow |
| Status | Sold |

Community Information

| | |
|-------------|------------------|
| Address | 10 Beaver Drive |
| Subdivision | NONE |
| City | Whitecourt |
| County | Woodlands County |
| Province | Alberta |
| Postal Code | T7S 1G3 |

Amenities

| | |
|----------------|---|
| Parking Spaces | 5 |
| Parking | Alley Access, Concrete Driveway, Double Garage Detached, Garage Door Opener, Garage Faces Rear, Heated Garage, Oversized, RV Access/Parking, RV Gated, Workshop in Garage |

Interior

| | |
|-------------------|--|
| Interior Features | Open Floorplan, Storage, Suspended Ceiling |
| Appliances | Central Air Conditioner, Dishwasher, Garage Control(s), Microwave Hood Fan, Refrigerator, Stove(s), Washer/Dryer, Window Coverings |
| Heating | Forced Air, Natural Gas |
| Cooling | Central Air |
| Fireplace | Yes |
| # of Fireplaces | 2 |
| Fireplaces | Family Room, Gas, Wood Burning |
| Has Basement | Yes |
| Basement | Finished, Full |

Exterior

| | |
|-------------------|--|
| Exterior Features | Fire Pit, Private Entrance, Private Yard |
| Lot Description | Back Lane, Back Yard, Front Yard, Lawn, Low Maintenance Landscape, Landscaped, Level, Street Lighting, Private, Rectangular Lot, Views |
| Roof | Shingle |
| Construction | Concrete, Wood Frame, Wood Siding |
| Foundation | Poured Concrete |

Additional Information

| | |
|----------------|---------------------|
| Date Listed | February 18th, 2024 |
| Date Sold | March 8th, 2024 |
| Days on Market | 19 |
| Zoning | R-1B |
| HOA Fees | 0.00 |

Listing Details

| | |
|----------------|-------------------------------|
| Listing Office | RE/MAX ADVANTAGE (WHITECOURT) |
|----------------|-------------------------------|

Data is supplied by Pillar 9â„¢ MLS® System. Pillar 9â„¢ is the owner of the copyright in its MLS® System. Data is deemed reliable but is not guaranteed accurate by Pillar 9â„¢. The trademarks MLS®, Multiple Listing Service® and the associated logos are owned by The Canadian Real Estate Association (CREA) and identify the quality of services provided by real estate professionals who are members of CREA. Used under license.