

# \$4,000 - 820 1 Avenue, Wainwright

MLS® #A2117112

**\$4,000**

0 Bedroom, 0.00 Bathroom,  
Commercial on 0.32 Acres

Wainwright, Wainwright, Alberta

Available for lease! 7200 sq ft truck shop in Wainwright with wash bay, and 5 truck bays. 14' wide X 16' high overhead doors. Located on 1st Avenue. Shop features a washroom, small office/tool crib with mezzanine storage

Built in 1997

## Essential Information

MLS® #	A2117112
Price	\$4,000
Sold Price	\$4,000
Bathrooms	0.00
Acres	0.32
Year Built	1997
Type	Commercial
Sub-Type	Industrial
Status	Sold

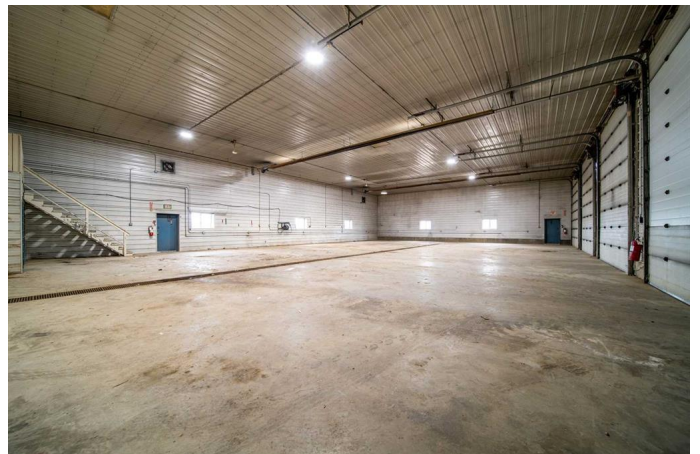
## Community Information

Address	820 1 Avenue
Subdivision	Wainwright
City	Wainwright
County	Wainwright No. 61, M.D. of
Province	Alberta
Postal Code	T9W 1C4

## Interior

Heating	Radiant
---------	---------

## Exterior



Construction            Wood Frame

**Additional Information**

Date Listed            March 27th, 2024  
Date Sold            September 19th, 2024  
Days on Market    176  
HOA Fees            0.00

**Listing Details**

Listing Office            CENTURY 21 CONNECT REALTY

Data is supplied by Pillar 9â„¢ MLS® System. Pillar 9â„¢ is the owner of the copyright in its MLS® System. Data is deemed reliable but is not guaranteed accurate by Pillar 9â„¢. The trademarks MLS®, Multiple Listing Service® and the associated logos are owned by The Canadian Real Estate Association (CREA) and identify the quality of services provided by real estate professionals who are members of CREA. Used under license.