

# \$417,500 - 2102, 100 Walgrove Court Se, Calgary

MLS® #A2117664

**\$417,500**

2 Bedroom, 3.00 Bathroom, 848 sqft

Residential on 0.00 Acres

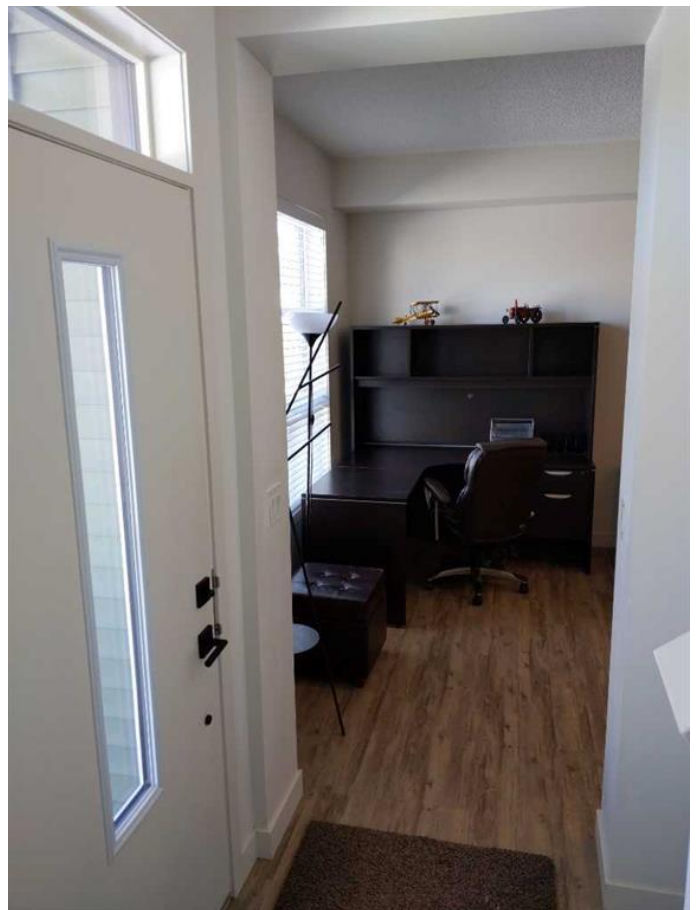
Walden, Calgary, Alberta

Welcome to urban living at its finest! This fantastic condo offers a perfect blend of comfort and convenience. Nestled in the community of Walden, this unit provides easy access to amenities, entertainment, and transportation, making it an ideal choice. The condo boasts a great design with sleek finishes and ample natural light. The layout creates a spacious feel, perfect for entertaining guests or relaxing after a long day. The well-organized kitchen is equipped with appliances, solid surface countertops, and plenty of cabinet space, making meal preparation a breeze. The living area is the perfect place to unwind and enjoy your favorite shows or curl up with a good book. The condo features two bedrooms with large windows, allowing for plenty of natural light. The 2.5 bathrooms offer a contemporary design with a bathtub/shower combination, sleek fixtures, and ample storage space. Don't miss out on this fantastic opportunity to own a home in Walden!!

Built in 2020

## Essential Information

MLS® #	A2117664
Price	\$417,500
Sold Price	\$415,000
Bedrooms	2
Bathrooms	3.00



Full Baths	2
Half Baths	1
Square Footage	848
Acres	0.00
Year Built	2020
Type	Residential
Sub-Type	Row/Townhouse
Style	2 Storey
Status	Sold

### **Community Information**

Address	2102, 100 Walgrove Court Se
Subdivision	Walden
City	Calgary
County	Calgary
Province	Alberta
Postal Code	T2X 4N1

### **Amenities**

Amenities	Parking, Snow Removal, Trash, Visitor Parking
Parking Spaces	1
Parking	Stall

### **Interior**

Interior Features	No Animal Home, No Smoking Home, Quartz Counters, Walk-In Closet(s), Wired for Data
Appliances	Dishwasher, Microwave Hood Fan, Refrigerator, Stove(s), Washer/Dryer
Heating	Forced Air
Cooling	None
Has Basement	Yes
Basement	Finished, Full

### **Exterior**

Exterior Features	BBQ gas line
Lot Description	Low Maintenance Landscape, Street Lighting
Roof	Asphalt Shingle
Construction	Composite Siding, Manufactured Floor Joist
Foundation	Poured Concrete

### **Additional Information**

Date Listed March 27th, 2024

Date Sold May 2nd, 2024

Days on Market 34

Zoning M-1 d85

HOA Fees 0.00

### Listing Details

Listing Office SUTTON GROUP - LETHBRIDGE



Data is supplied by Pillar 9â,,ç MLSÂ® System. Pillar 9â,,ç is the owner of the copyright in its MLSÂ® System. Data is deemed reliable but is not guaranteed accurate by Pillar 9â,,ç. The trademarks MLSÂ®, Multiple Listing ServiceÂ® and the associated logos are owned by The Canadian Real Estate Association (CREA) and identify the quality of services provided by real estate professionals who are members of CREA. Used under license.