

\$99,900 - 153 Park Drive, Anzac

MLS® #A2151324

\$99,900

0 Bedroom, 0.00 Bathroom,
Land on 1.04 Acres

N/A, Anzac, Alberta

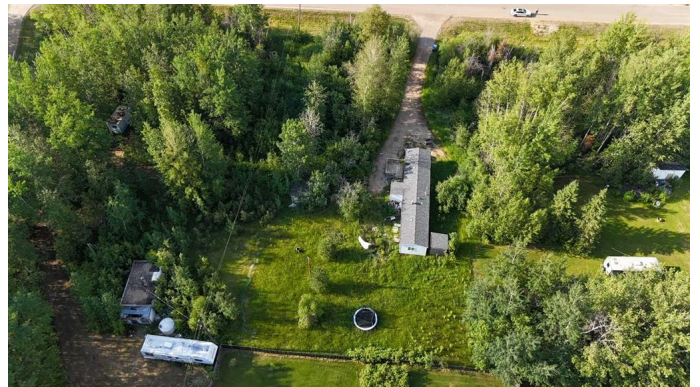
153 Park Drive! 1.04 Acre lot in Anzac with a Mobile home (as-is) on the lot with Shed and gravel drive! A good section of the lot is cleared at the rear. Zoned Hamlet Residential so you have many residential options here! Fix up the existing mobile and or remove and built your dream home! Located 1 block from Gregoire Lake and you have schools and shopping just around the corner and the Anzac firehall. GREAT OPPORTUNITY! There is sewer & water tanks on site; but you now have full Municipal services you can tie into if you choose at your expense!

Essential Information

MLS® #	A2151324
Price	\$99,900
Sold Price	\$100,000
Bathrooms	0.00
Acres	1.04
Type	Land
Sub-Type	Residential Land
Status	Sold

Community Information

Address	153 Park Drive
Subdivision	N/A
City	Anzac
County	Wood Buffalo
Province	Alberta



Postal Code T0P1J0

Amenities

Waterfront See Remarks

Exterior

Exterior Features Private Yard

Additional Information

Date Listed July 20th, 2024
Date Sold August 26th, 2024
Days on Market 37
Zoning HR
HOA Fees 0.00

Listing Details

Listing Office COLDWELL BANKER UNITED

Data is supplied by Pillar 9â„¢ MLS® System. Pillar 9â„¢ is the owner of the copyright in its MLS® System. Data is deemed reliable but is not guaranteed accurate by Pillar 9â„¢. The trademarks MLS®, Multiple Listing Service® and the associated logos are owned by The Canadian Real Estate Association (CREA) and identify the quality of services provided by real estate professionals who are members of CREA. Used under license.