

# **\$674,900 - 10508 Shillington Crescent Sw, Calgary**

MLS® #A2159275

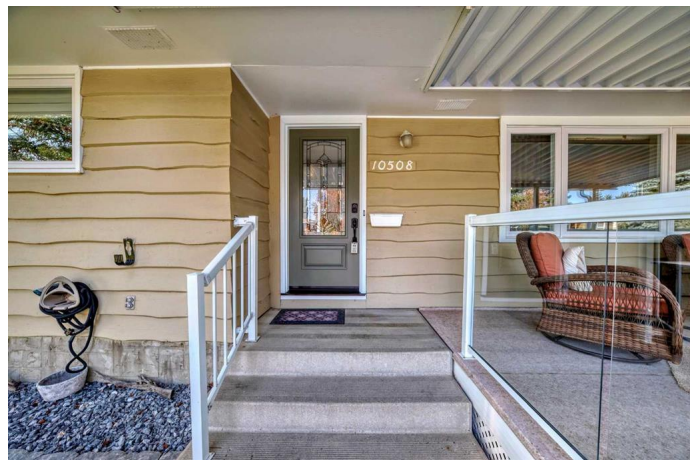
**\$674,900**

3 Bedroom, 1.00 Bathroom, 1,103 sqft

Residential on 0.15 Acres

Southwood, Calgary, Alberta

Welcome to this beautiful 3 BDRM EXTENSIVELY RENOVATED, bungalow located in the desirable community of Southwood, on an over 6500 sq ft lot. Walking up, you will immediately notice, the HUGE FRONT COVERED PORCH, WITH GALSS RAIL, EXCELLENT FOR RELAXING BBQ'S AND FAMILY GET TOGETHERS. As well as that, there are new exterior doors, the exterior of the HOUSE HAS BEEN REPAINTED, THE FENCE REPAINTED, ALL NEW WINDOWS UPSTAIRS, with NEW SHINGLES, NEW CHIMNEYS, EAVES REPAINTED AND NEW CONCRETE STAIRS. This home features a fully renovated top level, with a gorgeous kitchen for all your needs. All NEW LUXURY VINYL WIDE PLANK FLOORING, NEW LIGHTING, NEW BLINDS AND FULLY PAINTED INCLUDING THE CEILINGS. SS APPLIANCES, DBL DOOR FREFRIGERATOR WITH ICE AND WATER FEATURES, 3 LAZY SUSANS, QUARTZ COUNTERS, CUSTOM BACKSPLASH and an island that seats 2. The living room is huge and will accommodate your large furniture. The 3 bdrms and halls are all in solid oak flooring. tHE 4 PIECE BATHROOM HAS BEEN FULLY RENOVATED., the downstairs is partially finished, with some framing and drywall up, with a RECOGNIZABLE 4TH BDRM almost completed. ALSO, A NEW HIGH EFFICEINCY FURNACE, HUMIDIFIER WAS PUT IN 2023, AND NEW HOT WATER and HOT WATER TANK 2023. Out back, the



yard is fully landscaped with a patio, grassy areas, DBL GARAGE (WITH GARAGE DOOR AND MOTOR) AND RV PARKING WITH A GATE FOR EASY ACCESS. You'll have peace of mind seeing that this house was lovingly renovated and cared for by the owner. It's spotless and ready to move in with immediate possession available. This home is in an unsurpassable location within walking distance to schools and the Southland LRT station. The family-oriented community of Haysboro offers many parks and playgrounds as well as tennis courts and an outdoor skating rink with shops, services and restaurants close by. As well, neighboring Chinook, Southcentral, Heritage Park, Willow Park, Glenmore Reservoir pathway, and the bike pathway network, ensuring ample recreational opportunities with its many pathways, parks, spray park, boating and more!

Built in 1965

**Essential Information**

MLS® #	A2159275
Price	\$674,900
Sold Price	\$645,000
Bedrooms	3
Bathrooms	1.00
Full Baths	1
Square Footage	1,103
Acres	0.15
Year Built	1965
Type	Residential
Sub-Type	Detached
Style	Bungalow
Status	Sold

**Community Information**

Address	10508 Shillington Crescent Sw
---------	-------------------------------

Subdivision	Southwood
City	Calgary
County	Calgary
Province	Alberta
Postal Code	T2W0N7

### Amenities

Parking Spaces	2
Parking	Alley Access, Double Garage Detached, RV Access/Parking

### Interior

Interior Features	Ceiling Fan(s), No Smoking Home, Open Floorplan, Quartz Counters, See Remarks
Appliances	Dishwasher, Dryer, Electric Stove, Humidifier, Range Hood, Refrigerator, Washer, Window Coverings
Heating	High Efficiency, Forced Air, Natural Gas
Cooling	None
Has Basement	Yes
Basement	Full, Partially Finished

### Exterior

Exterior Features	Other, Private Yard
Lot Description	Back Lane, Back Yard, Lawn, Landscaped, Level, Private, Rectangular Lot
Roof	Asphalt Shingle
Construction	Wood Frame
Foundation	Poured Concrete

### Additional Information

Date Listed	August 24th, 2024
Date Sold	September 28th, 2024
Days on Market	35
Zoning	R-C1
HOA Fees	0.00

### Listing Details

Listing Office	One Percent Realty
----------------	--------------------

Data is supplied by Pillar 9â„¢ MLS® System. Pillar 9â„¢ is the owner of the copyright in its MLS® System. Data is deemed reliable but is not guaranteed accurate by Pillar 9â„¢. The trademarks MLS®, Multiple Listing Service® and the associated logos are owned by The Canadian Real Estate Association (CREA) and identify the quality of services

provided by real estate professionals who are members of CREA. Used under license.