

# \$295,000 - 1429 Strathcona Drive Sw, Calgary

---

MLS® #A2164207

## \$295,000

4 Bedroom, 4.00 Bathroom, 2,353 sqft

Residential on 0.12 Acres

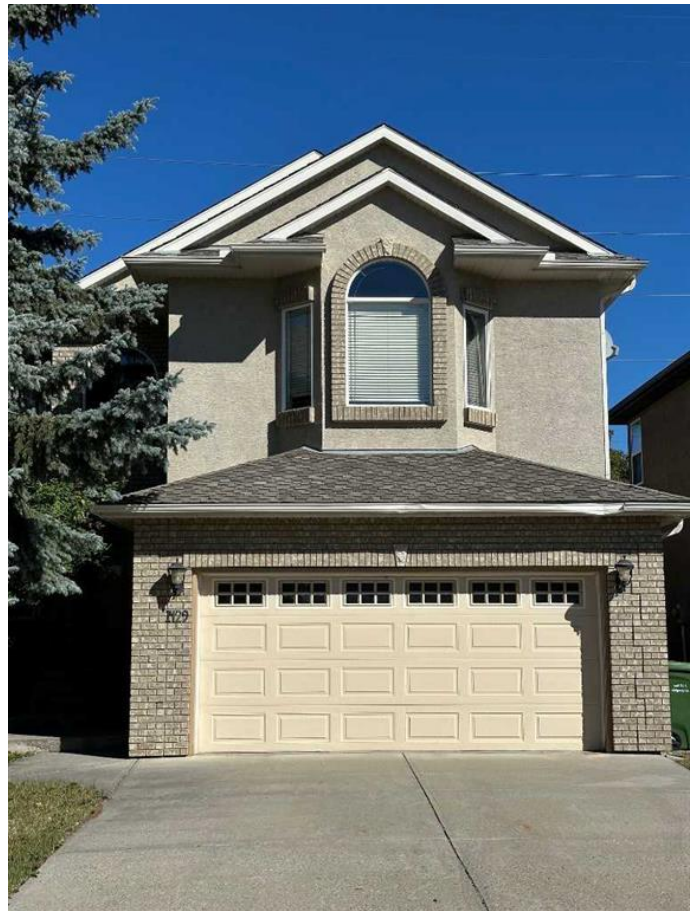
Strathcona Park, Calgary, Alberta

**\*COURT ACCEPTED OFFER\* SOLD- LAND VALUE -AGENTS please see private remarks-Offers due before Oct 16, 12pm NO ACCESS ALLOWED by City Order for Health/Safety. I have not seen the interior. City of Calgary Caveat will remain on on Title until directions are complied with by the ultimate purchaser. Extensive mould/water damage and uninhabitable. Drive by only. Property sold "AS IS/WHERE IS", NO WARRANTIES, REPRESENTATIONS". Offers to be in by Oct 16 with Court date Oct 17. Call your favorite Realtor today for more information in uploads. Measurements are taken from available City information. Located in the Community of Strathcona, this property is a short walk to green area pathways and minutes to schools and Aspen Woods Landing amenities including grocery store, banks, restaurants and boutiques.**

Built in 1999

## Essential Information

MLS® #	A2164207
Price	\$295,000
Sold Price	\$608,888
Bedrooms	4
Bathrooms	4.00
Full Baths	3
Half Baths	1
Square Footage	2,353



Acres	0.12
Year Built	1999
Type	Residential
Sub-Type	Detached
Style	2 Storey
Status	Sold

### Community Information

Address	1429 Strathcona Drive Sw
Subdivision	Strathcona Park
City	Calgary
County	Calgary
Province	Alberta
Postal Code	T3H 4M2

### Amenities

Parking Spaces	2
Parking	Double Garage Attached

### Interior

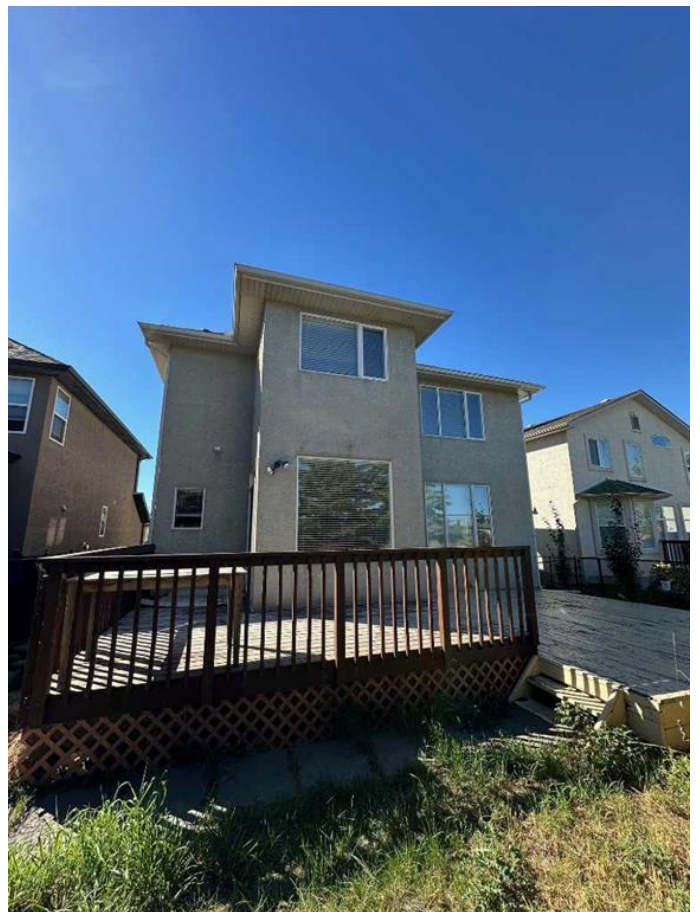
Interior Features	See Remarks
Appliances	See Remarks
Heating	Forced Air
Cooling	None
Fireplace	Yes
# of Fireplaces	1
Fireplaces	Gas
Has Basement	Yes
Basement	Finished, Full

### Exterior

Exterior Features	Other
Lot Description	Other
Roof	Asphalt Shingle
Construction	Brick, Stucco, Wood Frame
Foundation	Poured Concrete

### Additional Information

Date Listed	September 9th, 2024
-------------	---------------------



Date Sold	October 21st, 2024
Days on Market	41
Zoning	R-1
HOA Fees	0.00

**Listing Details**

Listing Office	RE/MAX Real Estate (Central)
----------------	------------------------------

Data is supplied by Pillar 9â„¢ MLS® System. Pillar 9â„¢ is the owner of the copyright in its MLS® System. Data is deemed reliable but is not guaranteed accurate by Pillar 9â„¢. The trademarks MLS®, Multiple Listing Service® and the associated logos are owned by The Canadian Real Estate Association (CREA) and identify the quality of services provided by real estate professionals who are members of CREA. Used under license.