

\$359,900 - 123, 7110 80 Avenue Ne, Calgary

MLS® #A2167512

\$359,900

2 Bedroom, 2.00 Bathroom, 972 sqft

Residential on 0.00 Acres

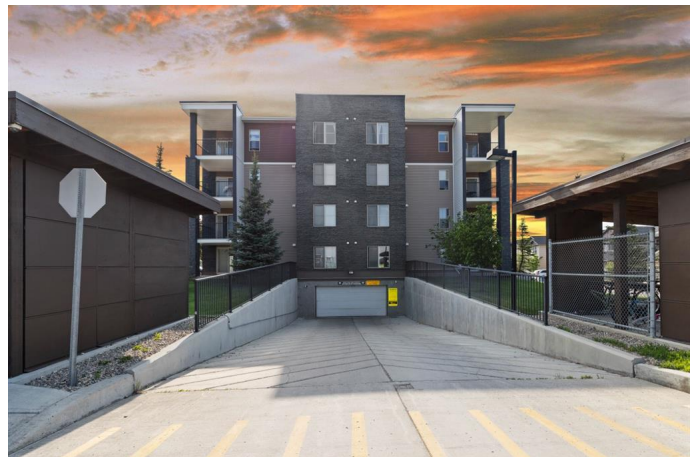
Saddle Ridge, Calgary, Alberta

****First-Time Home Buyers and Investors Alert!****Corner Unit, Underground Parking, Patio. View today and discover your new home in Saddleridge! This corner unit is perfect for first-time home buyers or investors looking for a prime location. With its bright and airy design, you'll love coming home to your cozy space that offers both comfort and style. It comes with two bedrooms and two full washroom. Enjoy the nearby amenities, including parks and shopping, making it an ideal spot. Call your for Favourite Realtor for viewing!

Built in 2013

Essential Information

MLS® #	A2167512
Price	\$359,900
Sold Price	\$352,500
Bedrooms	2
Bathrooms	2.00
Full Baths	2
Square Footage	972
Acres	0.00
Year Built	2013
Type	Residential
Sub-Type	Apartment
Style	Low-Rise(1-4)
Status	Sold



Community Information

Address	123, 7110 80 Avenue Ne
Subdivision	Saddle Ridge
City	Calgary
County	Calgary
Province	Alberta
Postal Code	T3J0N4

Amenities

Amenities	Other
Parking Spaces	1
Parking	Underground

Interior

Interior Features	Granite Counters, No Animal Home, No Smoking Home, Open Floorplan
Appliances	Dishwasher, Microwave, Range Hood, Washer/Dryer, Electric Cooktop
Heating	Baseboard
Cooling	None
# of Stories	4

Exterior

Exterior Features	Private Entrance
Construction	Brick, Vinyl Siding

Additional Information

Date Listed	September 21st, 2024
Date Sold	October 7th, 2024
Days on Market	15
Zoning	M-2
HOA Fees	0.00

Listing Details

Listing Office	URBAN-REALTY.ca
----------------	-----------------

Data is supplied by Pillar 9â„¸ MLSÂ® System. Pillar 9â„¸ is the owner of the copyright in its MLSÂ® System. Data is deemed reliable but is not guaranteed accurate by Pillar 9â„¸. The trademarks MLSÂ®, Multiple Listing ServiceÂ® and the associated logos are owned by The Canadian Real Estate Association (CREA) and identify the quality of services provided by real estate professionals who are members of CREA. Used under license.