

\$669,900 - 10727 Mapleshire Crescent Se, Calgary

MLS® #A2168166

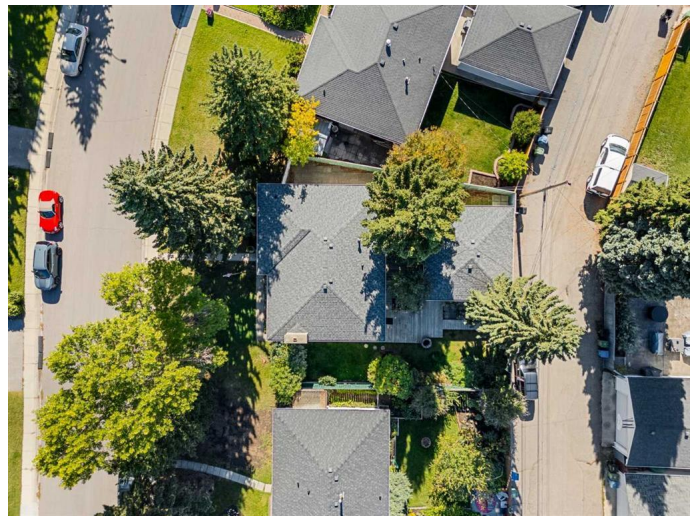
\$669,900

3 Bedroom, 2.00 Bathroom, 1,232 sqft

Residential on 0.15 Acres

Maple Ridge, Calgary, Alberta

Mapleshire Crescent is considered to be one of the best streets in Maple Ridge. Large lots with west facing backyards on the west side, homes that back one of the best locations on the golf course on the east side, & totally quiet with limited traffic. 10727 Mapleshire Crescent presents you with an opportunity for a fabulous bungalow with a really great backyard. This is a 6,717 square foot lot (75' frontage) which is larger than average for Maple Ridge. The backyard gets loads of sun from the west & is spectacular. At just under 2400 square feet of total developed space, this home has been lovingly maintained by a long term owner, & now it's time for this home to be passed on to the next family to make it theirs. 3 bedrooms on the main level, the primary bedrooms featuring a 2pc ensuite. Good sized kitchen is opened up to the dining area, making this space feel bright & spacious. Fully developed basement with lots of spaces to play & relax. This property presents an opportunity for a family to secure an amazing location in this community in an affordable price range. Update to your tastes as you enjoy living here. Also a great investment opportunity for future or current development. You will fall in love with this large, west facing backyard. Lots of space to hang out during warm summer evening, and to watch children play. Huge double garage with its own electric panel. Again, an amazing location in Maple Ridge. Quiet street & a short walk to schools, parks, the Willow Ridge community centre +



outdoor rink & more. Easy access to get yourself in & out of the community & on your way. What a great opportunity in this fabulous community!

Built in 1968

Essential Information

MLS® #	A2168166
Price	\$669,900
Sold Price	\$669,900
Bedrooms	3
Bathrooms	2.00
Full Baths	1
Half Baths	1
Square Footage	1,232
Acres	0.15
Year Built	1968
Type	Residential
Sub-Type	Detached
Style	Bungalow
Status	Sold

Community Information

Address	10727 Mapleshire Crescent Se
Subdivision	Maple Ridge
City	Calgary
County	Calgary
Province	Alberta
Postal Code	T2J 1Z1

Amenities

Parking Spaces	2
Parking	Double Garage Detached

Interior

Interior Features	Bookcases
Appliances	Dishwasher, Dryer, Electric Stove, Freezer, Garage Control(s), Microwave, Refrigerator, Washer, Window Coverings

Heating	Forced Air
Cooling	None
Fireplace	Yes
# of Fireplaces	1
Fireplaces	Gas
Has Basement	Yes
Basement	Finished, Full

Exterior

Exterior Features	Fire Pit, Garden, Rain Barrel/Cistern(s)
Lot Description	Irregular Lot
Roof	Asphalt Shingle
Construction	Vinyl Siding, Wood Frame
Foundation	Poured Concrete

Additional Information

Date Listed	September 24th, 2024
Date Sold	October 7th, 2024
Days on Market	13
Zoning	R-CG
HOA Fees	0.00

Listing Details

Listing Office	RE/MAX First
----------------	--------------

Data is supplied by Pillar 9â„¢ MLS® System. Pillar 9â„¢ is the owner of the copyright in its MLS® System. Data is deemed reliable but is not guaranteed accurate by Pillar 9â„¢. The trademarks MLS®, Multiple Listing Service® and the associated logos are owned by The Canadian Real Estate Association (CREA) and identify the quality of services provided by real estate professionals who are members of CREA. Used under license.