

\$529,900 - 115, 950 Centre Avenue Ne, Calgary

MLS® #A2168433

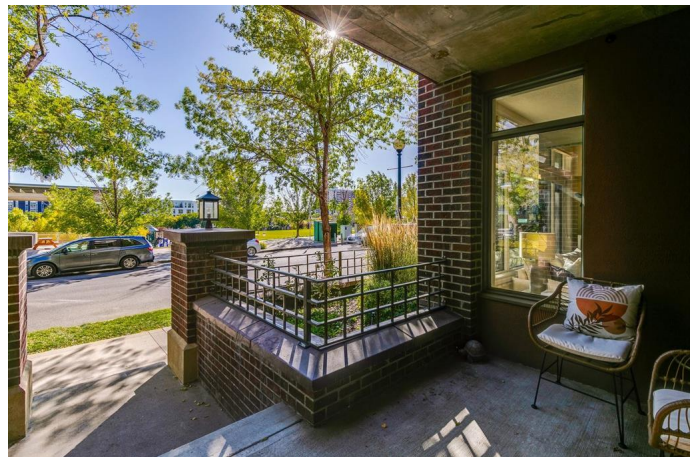
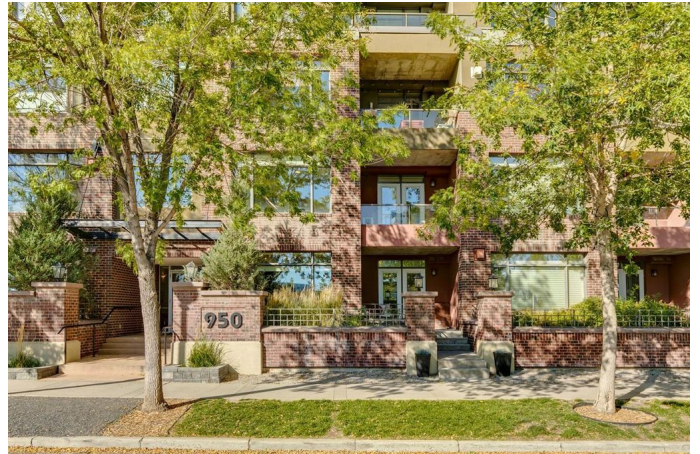
\$529,900

2 Bedroom, 3.00 Bathroom, 1,265 sqft

Residential on 0.00 Acres

Bridgeland/Riverside, Calgary, Alberta

WELCOME to this Gorgeous townhome in the desirable community of Bridgeland overlooking Murdoch Park in the heart of the city. This Trendy and Vibrant home immediately impresses with its comfortable and functional layout. PRIDE OF OWNERSHIP is evident throughout and will impress even the most discernible buyer with its immaculate condition. The main floor plan lets gatherings flow smoothly from the kitchen to the dining room and living room and then out to the SOUTH FACING patio. The main floor features high ceilings, gorgeous HARDWOOD floors, NEW Artisan LPV flooring upstairs, New Carpet on stairs, New Backsplash and Gas Stove. High-end stainless steel appliances, granite counter tops, custom built-in shelving with gas fireplace and an extensive WINDOW PACKAGE drench the interior space with natural light. The second level hosts 2 lavish bedrooms, including a MASTER RETREAT with PRIVATE balcony, walk-in closet and spectacular ensuite with Shower & Soaker Tub. The SECOND BEDROOM features stunning VIEWS of the park and greenspace; it is also generous in size and features its very own PRIVATE ENSUITE. The den/storage area and full-size laundry room complete the upper level. Additional features include Air Conditioning wall units in both bedrooms and on the Main Level, heated underground parking with TWO TITLED parking stalls, separate storage room + bike lockers and large communal parkade wash bay. Close to



ALL the shopping that matters most: shops, restaurants, eclectic cafes surrounded by parks and bicycle pathway systems, Calgary Zoo, Telus Spark Centre and downtown. Being so centrally located means that the ONLY "rush" in the morning comes from your Starbucks latte a few strides away.!. This is THE Property you won't want to miss!

Built in 2006

Essential Information

MLS® #	A2168433
Price	\$529,900
Sold Price	\$522,500
Bedrooms	2
Bathrooms	3.00
Full Baths	2
Half Baths	1
Square Footage	1,265
Acres	0.00
Year Built	2006
Type	Residential
Sub-Type	Apartment
Style	High-Rise (5+)
Status	Sold

Community Information

Address	115, 950 Centre Avenue Ne
Subdivision	Bridgeland/Riverside
City	Calgary
County	Calgary
Province	Alberta
Postal Code	T2E0P3

Amenities

Amenities	Car Wash, Elevator(s), Picnic Area, Secured Parking, Snow Removal, Storage, Trash, Visitor Parking
-----------	--

Parking Spaces	2
Parking	Heated Garage, Owned, Paved, Secured, Titled, Underground

Interior

Interior Features	French Door, No Smoking Home, Storage, Breakfast Bar, Bookcases, Built-in Features, Ceiling Fan(s), Closet Organizers, Granite Counters, High Ceilings, No Animal Home, Open Floorplan, Pantry, Separate Entrance, Walk-In Closet(s)
Appliances	Dryer, Refrigerator, Washer, Window Coverings, Oven-Built-In, Dishwasher
Heating	Natural Gas, Baseboard, Fireplace(s), Hot Water
Cooling	Sep. HVAC Units
Fireplace	Yes
# of Fireplaces	1
Fireplaces	Gas
# of Stories	6

Exterior

Exterior Features	Lighting, Courtyard, Playground, Storage
Construction	Stucco, Brick, Concrete

Additional Information

Date Listed	September 28th, 2024
Date Sold	November 5th, 2024
Days on Market	38
Zoning	DC
HOA Fees	0.00

Listing Details

Listing Office	RE/MAX iRealty Innovations
----------------	----------------------------

Data is supplied by Pillar 9â„¢ MLSÂ® System. Pillar 9â„¢ is the owner of the copyright in its MLSÂ® System. Data is deemed reliable but is not guaranteed accurate by Pillar 9â„¢. The trademarks MLSÂ®, Multiple Listing ServiceÂ® and the associated logos are owned by The Canadian Real Estate Association (CREA) and identify the quality of services provided by real estate professionals who are members of CREA. Used under license.