

\$635,000 - 12 Brightondale Crescent Se, Calgary

MLS® #A2169214

\$635,000

3 Bedroom, 3.00 Bathroom, 1,270 sqft

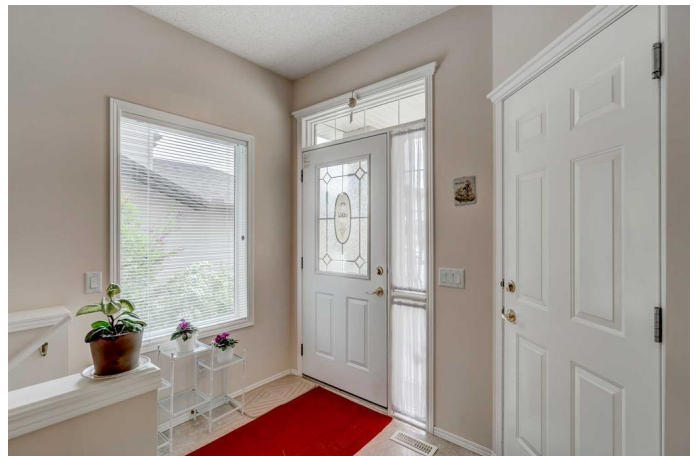
Residential on 0.09 Acres

New Brighton, Calgary, Alberta

Welcome to this pristine bungalow nestled in the heart of New Brighton, a highly sought-after family-oriented community! This well-maintained home boasts a spacious open floor plan. As you step inside, you'll be greeted by a large primary bedroom complete with a private ensuite, along with a generously sized second bedroom and a convenient half bathroom. The heart of the home is the inviting kitchen, equipped with an island perfect for casual dining and entertaining. Enjoy the ease of main floor laundry and cozy evenings in the bright living room that flows seamlessly into the rest of the space. The fully developed lower level showcases a large family room, a third bedroom, and a versatile den that can serve as a home office or playroom, complemented by a full bathroom for added convenience. Outside, the cozy backyard offers a tranquil retreat ideal for gardening or relaxation. The double attached garage provides ample storage and convenience. This home has undergone numerous upgrades, including a newer roof, AC unit, water tank, appliances, and garage door. Situated in a prime location, you'll be just steps away from New Brighton School, an outdoor rink, tennis courts, a baseball diamond, and a playground—perfect for family fun and community gatherings.

Built in 2003

Essential Information



| | |
|----------------|-------------|
| MLS® # | A2169214 |
| Price | \$635,000 |
| Sold Price | \$607,500 |
| Bedrooms | 3 |
| Bathrooms | 3.00 |
| Full Baths | 2 |
| Half Baths | 1 |
| Square Footage | 1,270 |
| Acres | 0.09 |
| Year Built | 2003 |
| Type | Residential |
| Sub-Type | Detached |
| Style | Bungalow |
| Status | Sold |

Community Information

| | |
|-------------|-----------------------------|
| Address | 12 Brightondale Crescent Se |
| Subdivision | New Brighton |
| City | Calgary |
| County | Calgary |
| Province | Alberta |
| Postal Code | T2Z4G6 |

Amenities

| | |
|----------------|------------------------|
| Amenities | None |
| Parking Spaces | 2 |
| Parking | Double Garage Attached |

Interior

| | |
|-------------------|---|
| Interior Features | Open Floorplan, High Ceilings, Skylight(s) |
| Appliances | Dishwasher, Refrigerator, Washer/Dryer, Central Air Conditioner, Electric Cooktop, Oven |
| Heating | Forced Air, Natural Gas |
| Cooling | Central Air |
| Fireplace | Yes |
| # of Fireplaces | 2 |
| Fireplaces | Gas, Electric |
| Has Basement | Yes |
| Basement | Finished, Full |

Exterior

| | |
|-------------------|---------------------------|
| Exterior Features | Garden, Private Yard |
| Lot Description | Back Yard, Treed |
| Roof | Asphalt Shingle |
| Construction | Stucco, Stone, Wood Frame |
| Foundation | Poured Concrete |

Additional Information

| | |
|----------------|--------------------|
| Date Listed | October 1st, 2024 |
| Date Sold | October 26th, 2024 |
| Days on Market | 25 |
| Zoning | R-G |
| HOA Fees | 355.95 |
| HOA Fees Freq. | ANN |

Listing Details

| | |
|----------------|-------------------------------|
| Listing Office | Century 21 Bamber Realty LTD. |
|----------------|-------------------------------|

Data is supplied by Pillar 9â„¢ MLS® System. Pillar 9â„¢ is the owner of the copyright in its MLS® System. Data is deemed reliable but is not guaranteed accurate by Pillar 9â„¢. The trademarks MLS®, Multiple Listing Service® and the associated logos are owned by The Canadian Real Estate Association (CREA) and identify the quality of services provided by real estate professionals who are members of CREA. Used under license.