

\$409,900 - 413, 510 Edmonton Trail Ne, Calgary

MLS® #A2170440

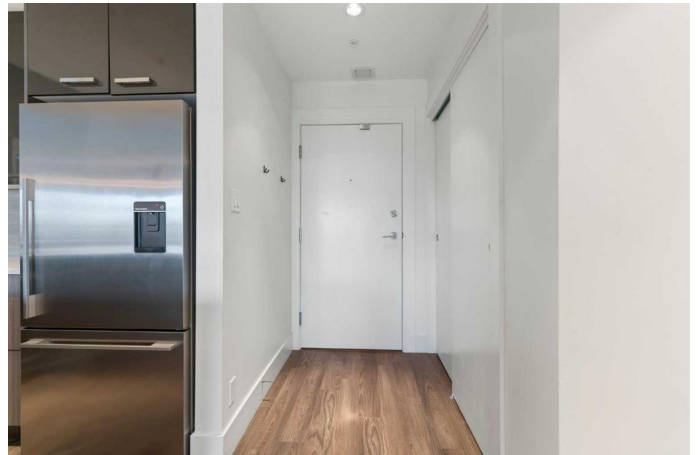
\$409,900

2 Bedroom, 2.00 Bathroom, 774 sqft

Residential on 0.00 Acres

Bridgeland/Riverside, Calgary, Alberta

Say "hello!" to your new home in the coveted community of Bridgeland. This bright & sunny TOP FLOOR CORNER UNIT is equipped with 2 bedrooms, 2 full bathrooms & a covered balcony! As you enter the unit, you'll notice the super functional open concept floor plan. The stunning kitchen has lots of storage space, sleek & modern cabinetry, SS appliances including GAS stove & quartz countertops! There is tons of space for a dining table and the living room is large with super tall ceilings and access to the covered east facing balcony w/ views of the courtyard – enjoy a coffee or tea and watch the sunrise here each morning! The primary bedroom features a walk-in closet, plus the 3 pc ensuite bathroom w/ quartz counters and a walk-in shower. The 2nd bedroom is a great size as well. The secondary full bathroom offers a shower/tub combo w/ the same stunning finishings & the unit offers in-suite laundry. This unit even comes with an underground titled parking stall to keep your car warm all winter long & a storage locker! The Bridgeland Hill building offers loads of amenities including a fitness centre, bike storage room, visitor parking & more! This location is tough to beat as it is walkable to downtown, the c-train, and only a 15 minute drive to the airport. Perfect for the traveling professional, a young couple, or investors. You will love Bridgeland's close-knit community vibe and array of local amenities including local restaurants, boutique shops,



schools, and the Bridgeland-Riverside Farmersâ€™ Market. Book your showing today before it's gone! *Some photos have virtual staging*

Built in 2016

Essential Information

MLS® #	A2170440
Price	\$409,900
Sold Price	\$406,000
Bedrooms	2
Bathrooms	2.00
Full Baths	2
Square Footage	774
Acres	0.00
Year Built	2016
Type	Residential
Sub-Type	Apartment
Style	Apartment
Status	Sold

Community Information

Address	413, 510 Edmonton Trail Ne
Subdivision	Bridgeland/Riverside
City	Calgary
County	Calgary
Province	Alberta
Postal Code	T2E 3H1

Amenities

Amenities	Bicycle Storage, Fitness Center, Secured Parking, Storage, Visitor Parking
Parking Spaces	1
Parking	Parkade, Titled, Underground

Interior

Interior Features	Closet Organizers, High Ceilings, Open Floorplan, Quartz Counters, Recessed Lighting, Walk-In Closet(s)
-------------------	---

Appliances	Dishwasher, Garage Control(s), Gas Stove, Microwave Hood Fan, Refrigerator, Washer/Dryer, Window Coverings
Heating	Baseboard
Cooling	None
# of Stories	4

Exterior

Exterior Features	Balcony, Courtyard
Construction	Composite Siding, Vinyl Siding, Wood Frame

Additional Information

Date Listed	October 4th, 2024
Date Sold	October 17th, 2024
Days on Market	13
Zoning	M-C2
HOA Fees	0.00

Listing Details

Listing Office	Royal LePage Benchmark
----------------	------------------------

Data is supplied by Pillar 9â„¢ MLS® System. Pillar 9â„¢ is the owner of the copyright in its MLS® System. Data is deemed reliable but is not guaranteed accurate by Pillar 9â„¢. The trademarks MLS®, Multiple Listing Service® and the associated logos are owned by The Canadian Real Estate Association (CREA) and identify the quality of services provided by real estate professionals who are members of CREA. Used under license.