

\$639,000 - 146 Hillview Lane, Strathmore

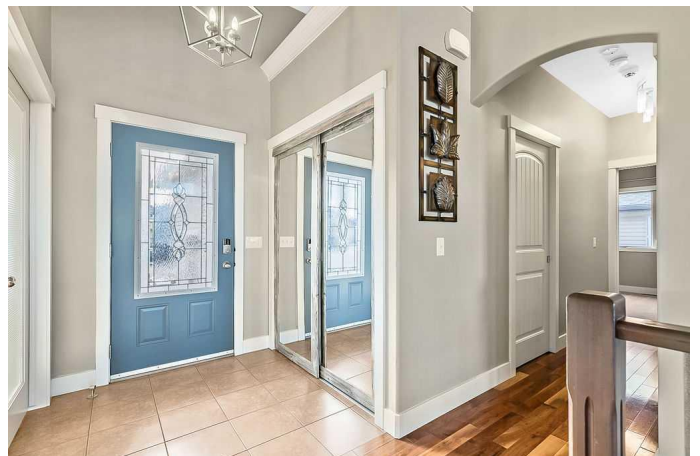
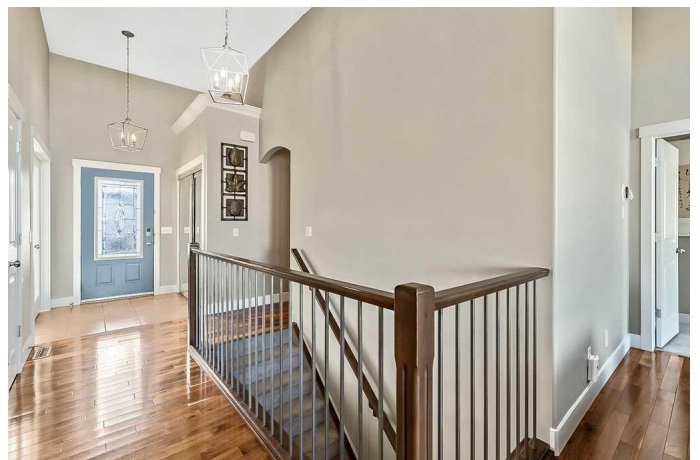
MLS® #A2174390

\$639,000

4 Bedroom, 3.00 Bathroom, 1,459 sqft
Residential on 0.13 Acres

Hillview Estates, Strathmore, Alberta

Welcome Home! This move in ready fully developed air conditioned bungalow has everything on your wish list! Located in the desirable area of Hillview, backing onto the soccer field, with views of the baseball diamond and the park! From the wide staircase leading to your front door, once inside you are greeted by an open floor plan, hardwood floors, and ceramic tile. The office/bedroom/sitting room is located conveniently by the front door. The Open floor plan with high ceilings welcomes you into the main living space. The Kitchen boasts a large island, granite, a walk in pantry, upgraded appliances (Induction stove with air fryer and Convection Oven) and overlooks the eating area as well as the living room. The living room has a gas fireplace and lots of windows. The master bedroom is located just off the Living room and has plenty of space for your King Size Bed and furniture, walk in closet and a full 4 piece ensuite complete with Jetted tub. Another bedroom, 4 piece bath along with the main floor laundry room are all located on the main floor. Downstairs is complete with 2 Large bedrooms, 4 piece bath, family room, games room and utility room. The downstairs is roughed in for infloor heat. The Hot water tank has recently been upgraded to a 60 gallon tank. The yard is fully fenced and landscaped with flower beds and even a cherry tree in the front yard. The oversized back deck has plenty of storage under neath. The Front south facing Garage (



great for the snow melt) is insulated, drywalled, storage shelves, work bench and complete with Garage Zone flooring.

Built in 2007

Essential Information

MLS® #	A2174390
Price	\$639,000
Sold Price	\$633,500
Bedrooms	4
Bathrooms	3.00
Full Baths	3
Square Footage	1,459
Acres	0.13
Year Built	2007
Type	Residential
Sub-Type	Detached
Style	Bungalow
Status	Sold

Community Information

Address	146 Hillview Lane
Subdivision	Hillview Estates
City	Strathmore
County	Wheatland County
Province	Alberta
Postal Code	T1P 1Z8

Amenities

Parking Spaces	4
Parking	Double Garage Attached, Front Drive, Garage Door Opener, Other

Interior

Interior Features	Ceiling Fan(s), Granite Counters, High Ceilings, Jetted Tub, Kitchen Island, Open Floorplan, Pantry, Vinyl Windows, Walk-In Closet(s)
Appliances	Central Air Conditioner, Dishwasher, Electric Range, Microwave Hood Fan, Refrigerator, Washer/Dryer, Window Coverings, Garburator
Heating	Forced Air, Natural Gas, In Floor Roughed-In

Cooling	Central Air
Fireplace	Yes
# of Fireplaces	1
Fireplaces	Gas, Mantle
Has Basement	Yes
Basement	Finished, Full

Exterior

Exterior Features	Storage, Rain Barrel/Cistern(s)
Lot Description	Back Yard, Backs on to Park/Green Space, Fruit Trees/Shrub(s), Landscaped, Street Lighting, Rectangular Lot
Roof	Asphalt Shingle
Construction	Wood Frame
Foundation	Poured Concrete

Additional Information

Date Listed	November 8th, 2024
Date Sold	November 13th, 2024
Days on Market	5
Zoning	R1
HOA Fees	0.00

Listing Details

Listing Office	MaxWell Canyon Creek
----------------	----------------------

Data is supplied by Pillar 9â,,ç MLSÂ® System. Pillar 9â,,ç is the owner of the copyright in its MLSÂ® System. Data is deemed reliable but is not guaranteed accurate by Pillar 9â,,ç. The trademarks MLSÂ®, Multiple Listing ServiceÂ® and the associated logos are owned by The Canadian Real Estate Association (CREA) and identify the quality of services provided by real estate professionals who are members of CREA. Used under license.