

\$678,800 - 20 Panatella Drive Nw, Calgary

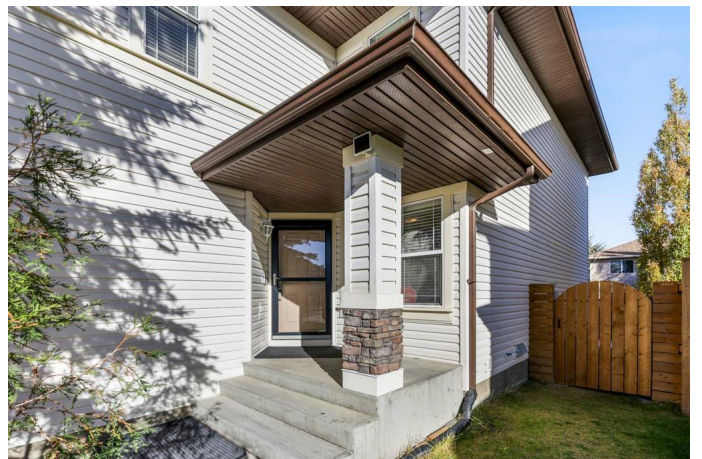
MLS® #A2174869

\$678,800

3 Bedroom, 3.00 Bathroom, 2,020 sqft
Residential on 0.09 Acres

Panorama Hills, Calgary, Alberta

Discover your dream family home in the heart of Panorama Hills! Located in a family friendly neighborhood within walking distance to multiple schools, amenities, and transportation. This beautifully maintained 2-storey home offers spacious living areas, with 3 bedrooms, 3 bathrooms, and a versatile bonus room. Upon entry, you are met with a bright and sunny dining room, perfect for hosting guests. Beautiful vinyl plank flooring guides you to a gourmet, open-concept kitchen with granite countertops, a breakfast eating bar, and designer tile backsplash. The kitchen opens to a living room with a corner gas fireplace and a breakfast nook. Sliding doors off of the breakfast nook lead to a wood deck and a private east facing backyard. The main floor is complete with a 2 piece powder room and a mudroom that leads out to a double attached garage. Upstairs, you'll find a spacious bonus room that offers endless possibilities, whether it's a home office, playroom, or family room. The large primary bedroom is a true retreat, boasting a 5 piece spa like ensuite, complete with a soaker tub, dual vanities, and a large walk in closet. Two additional bedrooms, a laundry room, and a 4 piece main bathroom provide added convenience to the upper floor. The basement is ready for development and offers a blank canvas to create your dream living space. Perfect for the growing family, this home offers exceptional value in a sought-after neighborhood.



Built in 2004

Essential Information

| | |
|----------------|-------------|
| MLS® # | A2174869 |
| Price | \$678,800 |
| Sold Price | \$665,000 |
| Bedrooms | 3 |
| Bathrooms | 3.00 |
| Full Baths | 2 |
| Half Baths | 1 |
| Square Footage | 2,020 |
| Acres | 0.09 |
| Year Built | 2004 |
| Type | Residential |
| Sub-Type | Detached |
| Style | 2 Storey |
| Status | Sold |

Community Information

| | |
|-------------|-----------------------|
| Address | 20 Panatella Drive Nw |
| Subdivision | Panorama Hills |
| City | Calgary |
| County | Calgary |
| Province | Alberta |
| Postal Code | T3K 6C2 |

Amenities

| | |
|----------------|--|
| Amenities | Other |
| Parking Spaces | 2 |
| Parking | Double Garage Attached, Driveway, Garage Door Opener |

Interior

| | |
|-------------------|--|
| Interior Features | Breakfast Bar, Closet Organizers, Granite Counters, Kitchen Island, No Animal Home, No Smoking Home, Open Floorplan, Walk-In Closet(s) |
| Appliances | Dishwasher, Dryer, Garage Control(s), Refrigerator, Range Hood, Stove(s), Washer, Window Coverings |
| Heating | Forced Air, Fireplace(s), Natural Gas |
| Cooling | None |
| Fireplace | Yes |

| | |
|-----------------|------------------|
| # of Fireplaces | 1 |
| Fireplaces | Gas, Great Room |
| Has Basement | Yes |
| Basement | Full, Unfinished |

Exterior

| | |
|-------------------|---|
| Exterior Features | Private Yard |
| Lot Description | Back Yard, Front Yard, Lawn, Landscaped, Street Lighting, Treed |
| Roof | Asphalt Shingle |
| Construction | Vinyl Siding, Wood Frame |
| Foundation | Poured Concrete |

Additional Information

| | |
|----------------|---------------------|
| Date Listed | October 25th, 2024 |
| Date Sold | November 11th, 2024 |
| Days on Market | 17 |
| Zoning | R-G |
| HOA Fees | 262.50 |
| HOA Fees Freq. | ANN |

Listing Details

| | |
|----------------|------------------------|
| Listing Office | Greater Property Group |
|----------------|------------------------|

Data is supplied by Pillar 9â„¢ MLS® System. Pillar 9â„¢ is the owner of the copyright in its MLS® System. Data is deemed reliable but is not guaranteed accurate by Pillar 9â„¢. The trademarks MLS®, Multiple Listing Service® and the associated logos are owned by The Canadian Real Estate Association (CREA) and identify the quality of services provided by real estate professionals who are members of CREA. Used under license.