

# \$374,000 - 1006, 2445 Kingsland Road Se, Airdrie

MLS® #A2245856

**\$374,000**

3 Bedroom, 4.00 Bathroom, 1,159 sqft

Residential on 0.03 Acres

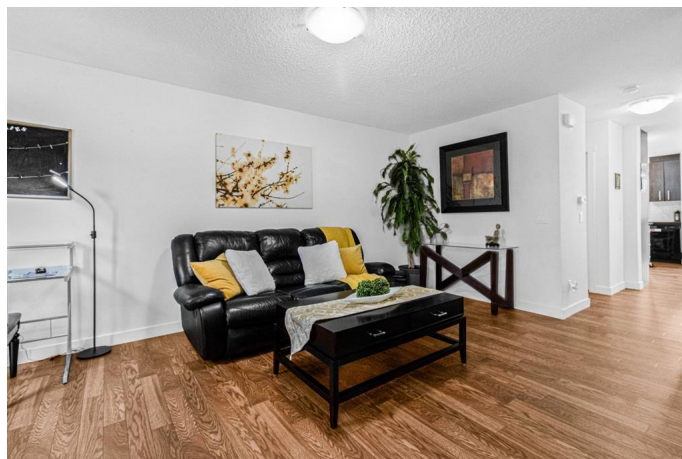
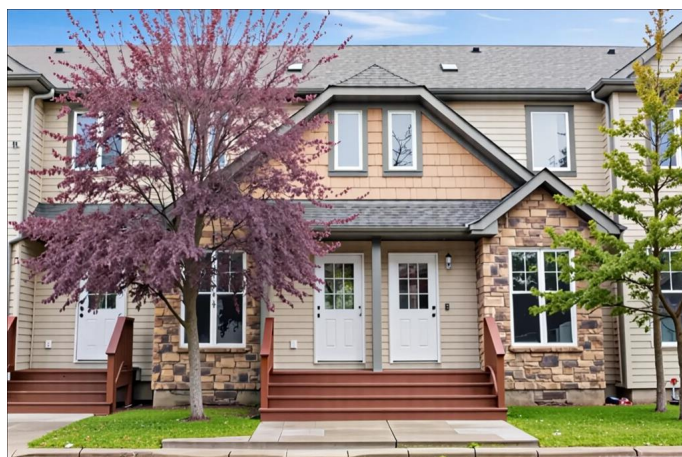
Kings Heights, Airdrie, Alberta

Welcome to this beautifully move-in ready townhouse in the heart of King's Heights! With 1,727 sq. ft. of total living space, this home offers the perfect blend of style and functionality. The bright, open-concept main floor features a thoughtfully designed kitchen boasting rich cabinetry, a stylish tiled backsplash, and a corner pantry – the perfect space to cook, gather, and entertain. Upstairs, you'll find two spacious primary bedrooms, each with its own ensuite for added privacy. The fully finished basement provides a third bedroom, a fourth bathroom, and a cozy flex space for guests or family. Step outside to your private, fully landscaped backyard, perfect for summer barbecues or quiet mornings. Enjoy tons of visitor parking, a pet-friendly complex, affordable condo fees, and a prime location just steps from schools, parks, and all the amenities you need – with easy access to Deerfoot Trail for effortless commuting. This is turnkey living at its finest!

Built in 2006

## Essential Information

MLS® #	A2245856
Price	\$374,000
Sold Price	\$367,000
Bedrooms	3
Bathrooms	4.00
Full Baths	3



Half Baths	1
Square Footage	1,159
Acres	0.03
Year Built	2006
Type	Residential
Sub-Type	Row/Townhouse
Style	2 Storey
Status	Sold

### Community Information

Address	1006, 2445 Kingsland Road Se
Subdivision	Kings Heights
City	Airdrie
County	Airdrie
Province	Alberta
Postal Code	T4A0B4

### Amenities

Amenities	Playground, Visitor Parking
Parking Spaces	1
Parking	Assigned, Stall

### Interior

Interior Features	Pantry, Vinyl Windows, Laminate Counters, No Smoking Home
Appliances	Dishwasher, Refrigerator, Electric Stove, Microwave Hood Fan, Washer/Dryer
Heating	Forced Air, Natural Gas
Cooling	None
Has Basement	Yes
Basement	Full, Finished

### Exterior

Exterior Features	Basketball Court, Private Yard
Lot Description	Backs on to Park/Green Space, Landscaped, Level, Rectangular Lot
Roof	Asphalt Shingle
Construction	Wood Frame, Vinyl Siding
Foundation	Poured Concrete

### Additional Information

Date Listed	August 11th, 2025
Date Sold	September 23rd, 2025
Days on Market	43
Zoning	R2-T
HOA Fees	0.00

**Listing Details**

Listing Office            RE/MAX Real Estate (Mountain View)

Data is supplied by Pillar 9â„¢ MLSÂ® System. Pillar 9â„¢ is the owner of the copyright in its MLSÂ® System. Data is deemed reliable but is not guaranteed accurate by Pillar 9â„¢. The trademarks MLSÂ®, Multiple Listing ServiceÂ® and the associated logos are owned by The Canadian Real Estate Association (CREA) and identify the quality of services provided by real estate professionals who are members of CREA. Used under license.